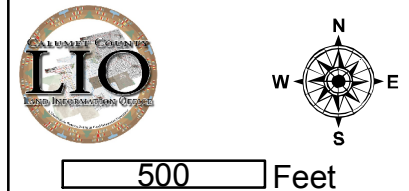


Village of Potter Zoning

Adopted August 8, 2011



500 Feet

Calumet County
Land Information Office
206 Court St, Chilton WI 53014
920-849-1442
August 25, 2011

- One and Two-Family Residential District (R-1)
- Multiple-Family Residential District (R-2)
- General Commercial District (C-1)
- Highway Commercial District (C-2)
- Extensive Commercial District (C-3)
- Industrial District (I)
- Agricultural District (A)
- Conservation District (CON)
- Recreational District (REC)
- Shoreland-Wetland District (W)